



# SIYC

## Race Week at Shelter Island

*August 3-4, 2018*  
Shelter Island, New York

### Sailing Instructions

#### 1 RULES

- 1.1 The regatta will be governed by the rules as defined in the *Racing Rules of Sailing* (RRS) and the US SAILING Prescriptions to the RRS. Appendix D, Team Racing Rules, will not apply.
- 1.2 **Safety Equipment Requirements:**
  - a) It is recommended that all boats be compliant with the current US Safety Requirements (USSER) US Near Shore category. These regulations are available on the US Sailing website. Competitors participate in this race at their own risk. See RRS 4, Decision to Race. The safety of a boat and her crew is the sole and inescapable responsibility of the person in charge of the boat.
  - b) Lifelines shall apply, except that yachts not normally rigged with lifelines are exempt for these requirements and the crew shall wear approved PFDs at all times while racing. This requirement does not apply to Classics, although they are strongly encouraged to wear PFDs.
  - c) In the event of a conflict between these Requirements and applicable class rules, the class rules shall apply.
- 1.3 The 2018 IRC Rules and Regulations paragraphs A, B and C shall apply to yachts racing under IRC. For the purposes of IRC Rules 21.1.5 (d) and (e), the Around-the-Island Race on Friday is considered to be a separate regatta.
- 1.4 The 2018 PHRF of ELI Regulations shall apply to yachts racing under PHRF. There are no crew weight limits.
- 1.5 The current class rules shall apply to all yachts racing as a one-design class, except as noted in these sailing instructions.
- 1.6 RRS 52 is modified to allow power operated winches for yachts sailing in non-spinnaker classes.

#### 2 ENTRIES

- 2.1 Eligible yachts shall enter by completing online registration with the Organizing Authority on the Yacht Scoring website [www.yachtscoring.com](http://www.yachtscoring.com).
- 2.2 Eligibility requirements for yachts and method of entry are detailed in the Notice of Race.
- 2.3 Team entries for the Around the Island Race may be made by e-mailing [rc@siyc.com](mailto:rc@siyc.com) by 1800 on Thursday, August 2, 2018, and for the one day Series on Saturday by 1800 on Friday, August 3, 2018.
- 2.4 There is no entry fee for either team event.

### 3 NOTICES, COMPETITOR INFORMATION AND SIGNALS MADE ASHORE

- 3.1 Notices, including race documents, results and amendments, shall be posted on the Official Notice Board. Jury information, including protest time limits and hearing schedules, shall be posted on the Jury Notice Board. Both boards are located at the front entrance of the Shelter Island Yacht Club.
- 3.2 Flag signals will be flown from the flagpole at the Shelter Island Yacht Club.
- 3.3 Any change to the sailing instructions will be posted before 0900 on the day it will take effect, except that any change to the schedule of races will be posted by 2000 on the day before it will take effect. Flag "Lima" will be flown to signify such posting.
- 3.4 When Pennant "AP" is displayed ashore, "one minute" is replaced with "not less than one hour" in Race Signal "AP".
- 3.5 Rendezvous locations for each day's racing will be displayed at 0900 on the Yacht Scoring website. The Race Committee will endeavor to announce the circle assignments, format and the rendezvous locations as described in SI 4 and SI 6 at that time over VHF Channel 72. The failure to make this announcement or for a yacht to hear this announcement will not be grounds for redress. This changes rule 62.1(a).
- 3.6 After the rendezvous locations and any other regatta announcements have been made, Race Committee Signal Boats will monitor and communicate with their respective classes on the VHF channels published in SI4.4.

### 4 CLASSES AND IDENTIFICATION

- 4.1 The Organizing Authority will divide yachts into classes.
  - a) For the Around-the-Island Race on Friday, August 3, classes will be assigned a numeral designation and be designated the BLUE Circle.
  - b) For racing on Saturday classes will be assigned a numeral designation and assigned to one of three circles (Blue, White, Red).
  - c) The Race Committee will notify competitors at 0900 of the circle assignments for each class.
- 4.2 **Scratch Sheets** - There will be separate scratch sheets for the Around-the-Island Race on Friday and for the Saturday Series. The scratch sheets designating class assignments will be posted on the Official Notice Board and on Yacht Scoring.
- 4.3 **VHF Channels** - The Race Committee VHF channels for each circle are shown below:

a) Friday, August 3	Blue Circle	VHF Channel 72	(All classes in Around-the-Island Race)
b) Saturday, August 4	Blue Circle	VHF Channel 72	
	White Circle	VHF Channel 68	
	Red Circle	VHF Channel 71	
- 4.4 **Backstay Flags** – Each yacht shall display the numeral flag corresponding to her class designation, as shown on the scratch sheet, from her backstay approximately six feet above the deck, from the warning signal of the first class on her circle until she is no longer racing. Yachts without a permanent backstay shall conspicuously display these flags in an alternate position in the aft part of the yacht. Designated one design fleets do not need to display a flag.

### 5 SCHEDULE OF RACES

- 5.1 The Around-the-Island Race will be sailed on Friday, August 3, and is open to all eligible yachts. This race will be scored separately from the racing on Saturday except as specifically requested by a one-design class to the OA. Course signals will be made on Friday, August 3, at 1200. Classes may not start in numerical order. See SI 9.2 and SI Appendix A.
- 5.2 The Saturday Series will be held on August 4. All races on Saturday will count in the Series. The course signals will be made at 1100 for all circles on Saturday, August 4.
- 5.3 No warning signal shall be made after 1700 on Saturday, August 4.

## 6 RENDEZVOUS LOCATIONS

Circle rendezvous locations are listed below and will be designated as described in SI 3.5. See SI Appendix D – SIYC Primary Race Areas.

### Gardiners Bay (“G”):

- Area “GA” - in the vicinity of RW “N” Mo(A) WHIS 1 ½ miles NE Ram Island
- Area “GB” - 2 miles South of Orient Point
- Area “GC” - 1 1/2 miles West of N”14” marking Crow Shoal

### Orient Harbor (“O”)

### Southold Bay (“S”)

### Noyak Bay (“N”)

**Peconic Bay (“P”)** - One miles south of R”18”

## 7 CHECK-IN AND RETIREMENT

- 7.1 Prior to the warning signal for the first race each day, all yachts shall check in with the Race Committee Signal Boat by passing astern on starboard tack and announcing their sail number. The Race Committee will acknowledge by responding with the number heard.
- 7.2 Yachts retiring are requested to inform the Race Committee on their circle VHF channel or by calling (631) 749-1829.

## 8 COURSES & MARKS

The courses and marks for each section of the Race Week at Shelter Island are described in the SI Appendices as shown:

Around-the-Island Race (all classes)	SI Appendix A
Navigator Courses	SI Appendix B
Drop Mark Courses	SI Appendix C

## 9 THE START

- 9.1 Races will be started in accordance with rule 26.
- 9.2 The intended order of start for the Around-the-Island Race on Friday, August 3, will be included in the Race Committee’s announcement on VHF Channel 72 at 0900. Classes may not start in numerical order. The Race Committee may combine two or more classes into one start by displaying multiple class flags at the Warning Signal. The Race Committee will endeavor to announce the next class(es) to start on VHF Channel 72.
- 9.3 A yacht starting later than 15 minutes after her starting signal will be scored Did Not Start. This changes rule A4.
- 9.4 The starting line will be between a staff displaying an orange flag on the Race Committee Signal Boat and the course side of the port-end starting mark.
- 9.5 Yachts whose warning signal has not been made shall keep clear of the starting area.

## 10 INDIVIDUAL RECALLS

The Race Committee will endeavor to hail each premature starter over their respective circle VHF channel. Failure to make such an announcement, nor the timing or order of any announcement, shall not be grounds for redress. This changes rule 62.1(a).

## 11 THE FINISH

The finishing line will be between a staff displaying a blue flag on the Race Committee Signal Boat and the course side of the finishing mark as described in the relevant SI Appendix.

## 12 GOVERNMENT BUOYS

Government buoys have no required side except when specified as marks of the course. Caution should be exercised for safe navigation.

## 13 PENALTY SYSTEM

- 13.1 For the Around-the-Island Race on Friday, August 3, the penalty described in SI 13.3 applies for all yachts. Class Rules do not apply.
- 13.2 In racing on Saturday, for one design classes, if class rules specify a penalty, a yacht that may have broken a rule of Part 2 while racing may take a penalty at the time of the incident as provided in her class rules.
- 13.3 For all other yachts where the class rules do not specify a penalty, rule 44.1 is changed so that a yacht has the choice between penalty systems, and the Two-Turns Penalty is replaced by the One-Turn Penalty. A yacht may choose either to:
  - a) take a One-Turn Penalty in accordance with rule 44.2; or
  - b) take a Scoring Penalty in accordance with rule 44.3.
- 13.4 A yacht that has taken a Scoring Penalty in accordance with rule 44.3 shall report to the RC by hailing or radio.

## 14 PROTESTS AND REQUESTS FOR REDRESS

- 14.1 It is requested that yachts intending to protest report both their intention and the yacht being protested to the Race Committee on the circle VHF channel immediately after finishing or withdrawing from the race.
- 14.2 Protests or requests for redress shall be submitted to the Jury Secretary in the SIYC Sailing Center as soon as possible, but not later than one hour after the Race Committee Signal Boat for that circle has docked, either on the written protest form available from the Jury Secretary or on the [online protest form](#). The time limit for filing a protest will be posted on the Official Notice Board.
- 14.3 Protest notices will be posted as soon as possible on the Jury Notice Board.
- 14.4 Protest hearings will take place at the SIYC Sailing Center as soon as possible after the notices are posted. The Jury will attempt to hear protests in the order of receipt. Representatives of yachts who are parties to a hearing shall remain on call in the vicinity of the protest rooms.
- 14.5 When a yacht has been involved in an incident that may be subject to protest, it is her responsibility to check the protest notices at the end of the protest filing time to see if she is cited in a protest. Failure of any yacht to appear when called for a hearing will be considered by the Jury as grounds for proceeding under rule 63.3(b).
- 14.6 Rule 63.5 is changed by adding, "A protest involving contact may be heard by the Protest Committee even though the requirements of rule 61.1(a) and 61.3 have not been fulfilled."
- 14.7 Breaches of SIs 4.4, 7, and 9.5 will not be grounds for a protest by a yacht. This changes rule 60.1(a).

## 15 SCORING

- 15.1 See SI 5. The Around-the-Island Race on Friday, August 3, will be scored separately from racing on Saturday.
- 15.2 In the Saturday Series, a yacht's series score will be the total of her race scores. There will be no drop race. This changes rule A2.
- 15.3 One race is required to be completed to constitute a series.
- 15.4 Teams competing for team trophies will be scored in accordance with the Notice of Race.

## 16 PRIZES

Prizes will be awarded as described in the Notice of Race.

## 17 NOTES

17.1 All times herein are Eastern Daylight times. Bearings are in degrees magnetic and are approximate. Distances used herein are expressed in nautical miles (when not otherwise defined) and are approximate.

### 17.2 Shelter Island Tides

Day	Date	Low Tide	Height	High Tide	Height
Friday	August 3	0943	0.51 ft.	1558	2.74 ft.
Saturday	August 4	1032	0.53 ft.	1652	2.85 ft.

17.3 For further information please contact:

PRO Jeffrey Bresnahan  
Tel: 631-749-1829  
Email: [jcbre@conncoll.edu](mailto:jcbre@conncoll.edu)

# **SAILING INSTRUCTIONS**

## **Appendix A – AROUND-THE-ISLAND RACE**

**1200 hrs Friday, August 3**

### **A1 ORDER OF START**

The intended order of start for the Around-the-Island Race will be included in the Race Committee's announcement on VHF Channel 72 at 1100. Classes may not start in numerical order. The Race Committee may combine two or more classes into one start by displaying multiple class flags at the Warning Signal. The Race Committee will endeavor to announce the next class(es) to start on VHF Channel 72.

### **A2 COURSES FOR AROUND-THE-ISLAND RACE**

The flag(s) designating the course to be sailed will be displayed at Course Signals. The Race Committee will endeavor to announce the designated courses over VHF channel 72. Failure to make such an announcement shall not be grounds for redress. This changes rule 62.1(a).

#### **A2.1 START**

Between an Orange Flag on the Race Committee Boat and the course side of a buoy set in the vicinity of the Shelter Island Yacht Club. The location of the start will be broadcast by VHF Channel 72 at 0900 hours.

#### **A2.2 WINDWARD MARK**

In order to achieve a proper start, the Race Committee may elect to set a weather mark at a distance from the starting line. The bearing and distance to this weather mark will be displayed on the Race Committee Signal boat with a white board. A flag "W" (weather mark) will be displayed over a red flag (leave to port) or a green flag (leave to starboard) at least five minutes prior to the first warning signal.

#### **A2.3 SHORTEN COURSE**

The courses may be shortened at any course mark in accordance with Rule 32.

#### **A2.4 COURSE "A" DESCRIPTION**

Course "A" will be signaled by flag "Alpha" displayed five minutes before the class flag(s). From the start (or weather mark, if there is one) sail counter clockwise around Shelter Island to the finish. The following marks shall be left as indicated:

R "10" Greenport Channel	Starboard
G "11" Jennings Pt.	Port
R "12" Paradise Point	Starboard
R"16" Noyac Bay	Port
G "15" Tyndal Point	Starboard
N "8" 0.5nm south of Mashomack Pt	Port
N "6" Opposite Cedar Point	Port
N "4" Nicoll Point	Port
G "1" Coecles Harbor	Port
C "3" Greenport Channel	Port
G "7" Greenport Channel	Port

## A2.5 COURSE "A2" DESCRIPTION

Course "A2" will be signaled by flag "Alpha" and white flag with a blue number 2 underneath displayed five minutes before the class flag(s). From the start (or weather mark, if there is one) sail counter clockwise around Shelter Island to the finish. The following marks shall be left as indicated:

R "10" Greenport Channel	Starboard
G "11" Jennings Pt.	Port
R "12" Paradise Point	Starboard
R"16" Noyac Bay	Port
G "15" Tyndal Point	Starboard
N "8" 0.5nm south of Mashomack Pt	Port
N "6" Opposite Cedar Point	Port
N "4" Nicoll Point	Port
G "1" Coecles Harbor	Port
RW "N" Mo(A) WHIS	Port
R "2" Bell Greenport Channel	Starboard
G "7" Greenport Channel	Port

## A2.6 COURSE "B" DESCRIPTION

Course "B" will be signaled by flag "Bravo" displayed five minutes before the class flag(s). From the start (or weather mark, if there is one) sail clockwise around Shelter Island to the finish. The following government marks shall be rounded as indicated:

G "7" Greenport Channel	Starboard
C "3" Greenport Channel	Starboard
G "1" Coecles Harbor	Starboard
N "4" Nicoll Point	Starboard
N "6" Opposite Cedar Point	Starboard
N "8" 0.5nm south of Mashomack Pt	Starboard
G "15" Tyndal Point	Port
R"16" Noyac Bay	Starboard
R "12" Paradise Point	Port
G "11" Jennings Pt.	Starboard
R "10" Greenport Channel	Port

## A2.7 COURSE "B2" DESCRIPTION

Course "B2" will be signaled by flag "Bravo" and white flag with a blue number 2 underneath displayed five minutes before the class flag(s). From the start (or weather mark, if there is one) sail clockwise around Shelter Island to the finish. The following marks shall be left as indicated:

G "7" Greenport Channel	Starboard
R "2" Bell Greenport Channel	Port
RW "N" Mo(A) WHIS	Starboard
G "1" Coecles Harbor	Starboard
N "4" Nicoll Point	Starboard
N "6" Opposite Cedar Point	Starboard
N "8" 0.5nm south of Mashomack Pt	Starboard
G "15" Tyndal Point	Port
R"16" Noyac Bay	Starboard
R "12" Paradise Point	Port
G "11" Jennings Pt.	Starboard
R "10" Greenport Channel	Port

## A2.8 FINISH

The finish will be between a Race Committee Boat with an orange staff and the course side of a buoy set in the vicinity of the mouth of Dering Harbor. The finish boat may be different from the start boat.



# **SAILING INSTRUCTIONS**

## **Appendix B – NAVIGATOR RACES**

**1100 hrs Saturday, August 4**

### **B1 ORDER OF START**

The intended order of start for the Navigator Races will be included in the Race Committee's announcement on the assigned VHF Channel prior to the first warning signal. Classes may not start in numerical order. The Race Committee may combine two or more classes into one start by displaying multiple class flags at the Warning Signal. The Race Committee will endeavor to announce the next class(es) to start on the assigned VHF Channel.

### **B2 START**

Between an Orange Flag on the Race Committee Boat and the course side of an inflatable buoy. The designated Rendezvous location and circle will be broadcast by VHF Channel 72 at 0900 hours.

### **B3 WINDWARD MARK**

- B.3.1 In order to achieve a proper start, the Race Committee may elect to set a weather mark at a distance from the starting line. The bearing and distance to this weather mark will be displayed on the Race Committee Signal boat with a white board. A flag "W" (weather mark) will be displayed over a red flag (leave to port) or a green flag (leave to starboard) at least five minutes prior to the first warning signal.
- B.3.2 The Race Committee may elect to set a long windward mark and a short windward mark. The distance displayed will be to the SHORT windward mark. The LONG windward mark will be on the same bearing at a distance of 0.5 NM beyond the short windward mark.
- B.3.3 If the flag "L" is displayed with the warning signal for a division, that division will use the LONG windward mark.
- B.3.4 If the flag "L" is not displayed at the warning signal for a division, that division will use the SHORT windward mark.
- B.3.5 The windward mark for a division may be used as a subsequent course mark for that division and will be designated as W with a P or S in the posted mark sequence for the course. The side on which W is to be left as a subsequent course mark might be different from the first rounding.

### **B4 SHORTEN COURSE**

The courses may be shortened at any course mark in accordance with Rule 32.

### **B5 COURSE DESCRIPTIONS**

The courses for each division will be configured by the Race Committee Signal Boat when it is on station at the starting location. These courses will be communicated from the Race Committee by white board on the stern of the Race Committee Signal boat and by transmission on the VHF Channel assigned to the designated Circle. Each course will be defined by the order marks are to be passed and the side on which each mark is to be left. It is anticipated that each course will be designed with the goal of having many points of sail. The marks to be used are described in **B7** and shown on the attached charts.

## **B6 FINISH**

- B.6.1 The finish will be between a Race Committee boat with an orange staff and the course side of an inflatable mark. The last entry in the posted course will indicate the location of the finish which may be in the vicinity of the start, PC for Pipes Cove, YC for Shelter Island Yacht Club or any other mark selected by the Race Committee. The finish boat may be different from the start boat.
- B.6.2 If a subsequent race is to be sailed, the finish line Race Committee Boat intends to fly Code Flag "R" with the Blue "On-Station" signal at the finish. If a Class Flag is displayed below Code Flag "R" the subsequent race is for that class(es) only. In addition, the Race Committee will attempt to announce a subsequent race on their respective circle VHF channel.

## **B7 MARKS**

### **B7.1 GARDINERS BAY**

#### **B7.1.1 GOVERNMENT MARKS**

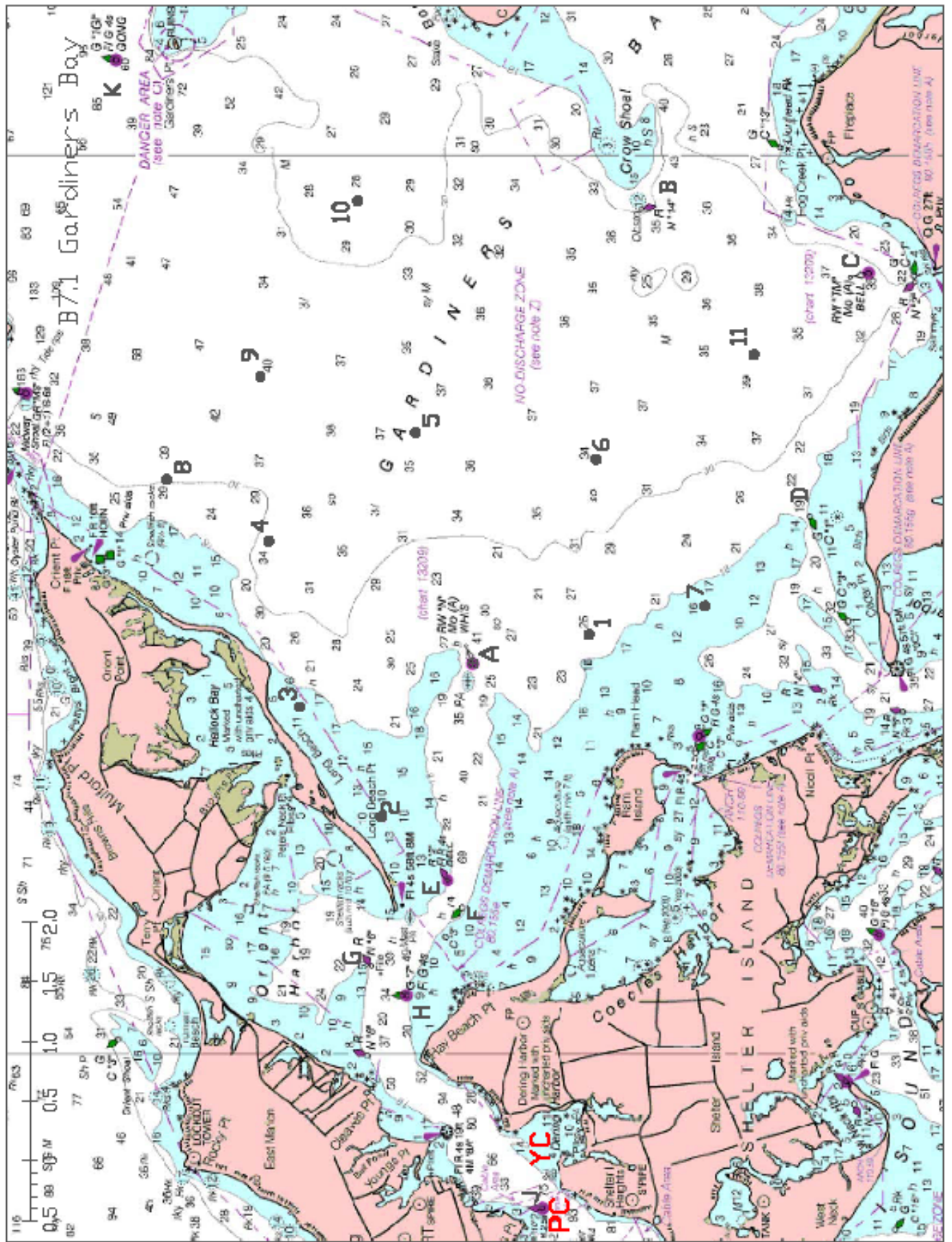
A	RW "N" Mo(A) WHIS 1 ½ miles NE Ram Island
B	N "14" Crow Shoal
C	RW "TM" Mo(A) Bell N of entrance to Three Mile Harbor
D	C "1" ENE of Cedar Point
E	Red FLR Bell "2" Entrance to Greenport Channel
F	C "3" Entrance to Greenport Channel off Cornelius Point
G	N "6" Orient Harbor
H	G "7" Fl G off Hay Beach
J	R "10" Fanning Point
K	G"1GI" Bell N of Gardiners Point Ruins

#### **B7.1.2 DROP MARKS**

Drop Marks will be inflatable marks positioned relative to RW "N" Mo(A) WHIS.

- |    |   |
|----|---|
| 1  | Race Marker 1 mile S (180 deg)          |
| 2  | Race Marker 1.5 miles NW (315 deg)      |
| 3  | Race Marker 1.5 miles N (000 deg)       |
| 4  | Race Marker 2 miles NE (045 deg)        |
| 5  | Race Marker 2 miles E (090 deg)         |
| 6  | Race Marker 2 miles SE (135 deg)        |
| 7  | Race Marker 2 miles S (180 deg)         |
| 8  | Race Marker 3 miles NE (045 deg)        |
| 9  | Race Marker 3 miles ENE (067.5 deg)     |
| 10 | Race Marker 4 miles E (090 deg)         |
| 11 | Race Marker 3.5 miles SE by S (146 deg) |

ALL BEARING DIRECTIONS ARE MAGNETIC.



## **B7.2 PECONIC BAY**

### **B7.2.1 GOVERNMENT MARKS**

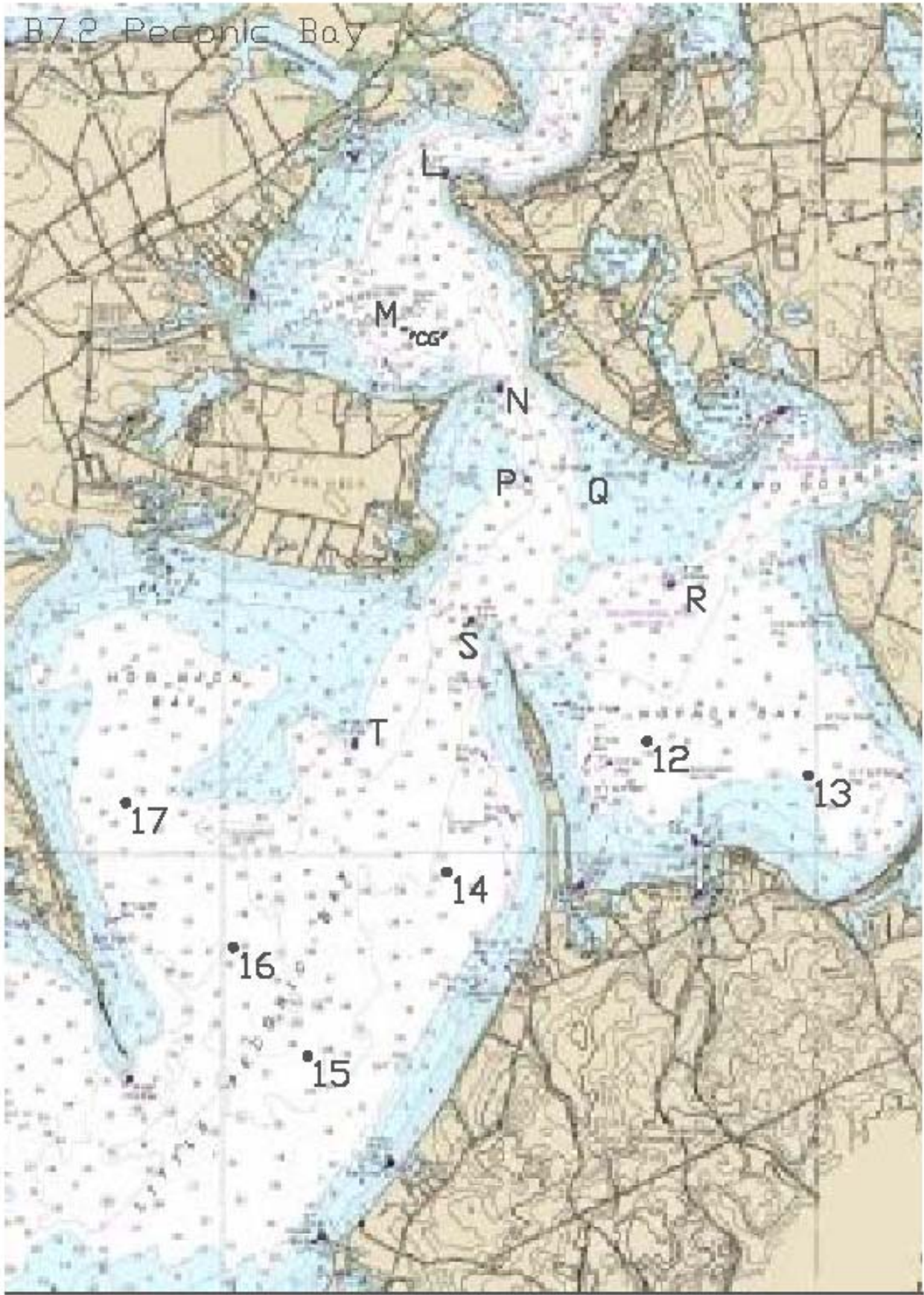
L	G "11" Jennings Point
M	"CG" about 0.7 miles NW (315 deg) from R "12" Paradise Point
N	R "12" Paradise Point
P	N "14" Great Hog Neck
Q	C "15" Black Dog Rock
R	R "16" Noyak Bay
S	G "17" Jessup Neck
T	R "18" Hog Neck Bay

### **B7.2.2 DROP MARKS**

12	Race Marker 1 mile SSW (202.5 deg) from R "16" Noyak Bay
13	Race Marker 1.5 miles SSE (157.5 deg) from R "16" Noyak Bay
14	Race Marker 1 miles SSE (157.5 deg) from N "18" Hog Neck Bay
15	Race Marker 2 miles SSW (202.5 deg) from N "18" Hog Neck Bay
16	Race Marker 1.5 miles WSW (247.5 deg) from N "18" Hog Neck Bay
17	Race Marker 1.5 miles W (270 deg) from N "18" Hog Neck Bay

ALL BEARING DIRECTIONS ARE MAGNETIC

B7.2 Peconic Bay



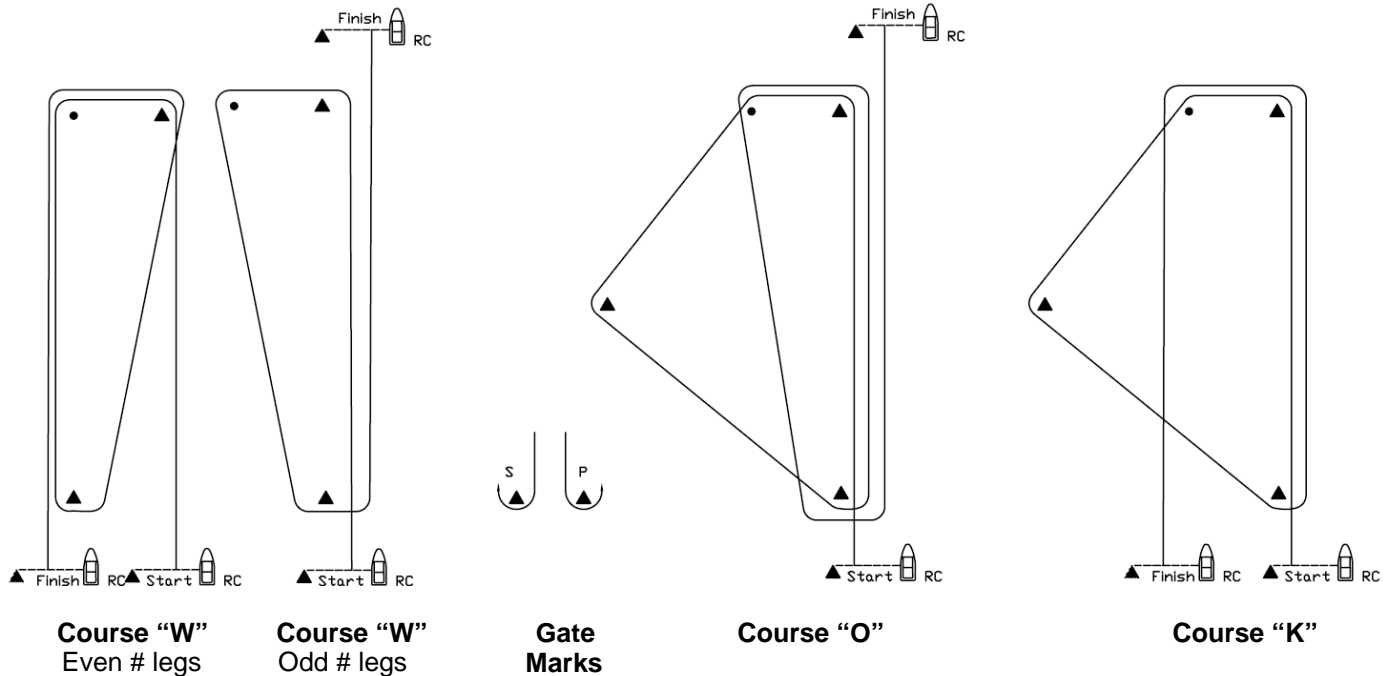
# SAILING INSTRUCTIONS

## Appendix C – DROP MARK RACES

Saturday, August 4

### C1 COURSES FOR DROP MARK RACES

#### C1.1 Course Diagrams



C1.2 **Course "W"** is a Windward/Leeward course with a windward offset mark. A numeral pennant indicating the number of **LEGS** to be raced will be flown beneath Flag "W". The distance between the windward mark and the offset mark shall not count as a leg for the purposes of indicating the number of legs.

C1.3 **Course "O"** is a Triangle/Windward/Leeward/Windward course.

C1.4 **Course "K"** is a Triangle/Windward/Leeward course.

C1.5 The leeward mark for Courses "W", "O", and "K" will be an inflatable mark(s) set approximately 0.10 NM to windward of the starting line. A gate mark may be used for Course "W".

C1.6 The course designation will be indicated by a flag flown from the Race Committee Signal Boat. The distance and bearing to the windward mark will be displayed on the Race Committee Signal boat with a white board.

C1.7 Rounding marks, including the windward offset mark, shall be rounded in order and always left to port, except that a gate, when used, shall be rounded as described in rule 28.1(c).

#### C1.9 Long Windward Mark:

- For course "W" with an even number of legs, the Race Committee may set a long windward mark and a short windward mark.
- The distance displayed will be to the SHORT windward mark. The long windward mark will be on the same bearing at a distance of 0.5 NM beyond the short windward mark.
- If flag "L" is displayed below the course signals (see diagram on previous page), that class will use the LONG windward mark for each weather leg in that race. If flag "L" is NOT displayed below the course signals, that class will use the SHORT windward mark for each weather leg in that race.

This changes the diagrams in SI Appendix C1.1.

## **C2 MARKS FOR DROP MARK COURSES**

C2.1 Marks will be inflatable buoys (except as noted) as follows:

<u>Circle</u>	<u>Original marks</u>	<u>Starting</u>	<u>Finishing</u>	<u>Change marks</u>
WHITE	Orange	White	Green	Black Band
BLUE	Yellow	White	Green	Black Band

C2.2 Offset marks will be small round pink buoys.

## **C3 COURSE CHANGE**

C3.1 In addition to the requirements in rule 33, the Race Committee will attempt to announce any course change on their respective circle VHF channel. Failure to make such an announcement shall not be grounds for redress. This changes rule 62.1(a).

C3.2 The new mark will have a black band as described in SI Appendix C2.1.  
For a subsequent change, the new mark will be the same as the original mark.

## **C4 THE FINISH**

C4.1 The finishing line will be between a staff displaying a blue flag on a Race Committee Boat and the finishing mark.

- a) For Course "W", with an odd number of legs, and Course "O", the finish line will be located approximately 0.1 NM to windward of the windward mark.
- b) For Course "W", with an even number of legs, and Course "K", the finish line will be located approximately 0.1 NM to leeward of the leeward mark. See diagrams in SI Appendix C1.1.

C4.2 If a subsequent race is to be sailed, the finish line Race Committee Boat intends to Code Flag "R" with the Blue "On-Station" signal at the finish. If a Class Flag is displayed below Code Flag "R" the subsequent race is for that class(es) only. In addition, the Race Committee will attempt to announce a subsequent race on their respective circle VHF channel.

C4.3 In fog at the finish, the Race Committee Boat may ring a bell rapidly, for approximately 5 seconds, at intervals. The same Race Committee Boat may or may not start and finish each race.

Appendix D  
SIYC Primary Race Areas

